

Investor Information (As of March 31, 2021)

Common Stock:

Issued: 1,631,481,403 shares
(including treasury stock)

Number of Stockholders: 215,278

Annual General Meeting:

The annual general meeting of stockholders is normally held in June in Tokyo.

Listings:

Common stock is listed on the Tokyo Stock Exchange.

Independent Auditor:

Ernst & Young ShinNihon LLC

Transfer Agent:

Sumitomo Mitsui Trust Bank, Limited
1-4-1, Marunouchi Chiyoda-ku, Tokyo
100-0005, Japan

Cash Dividends Per Share

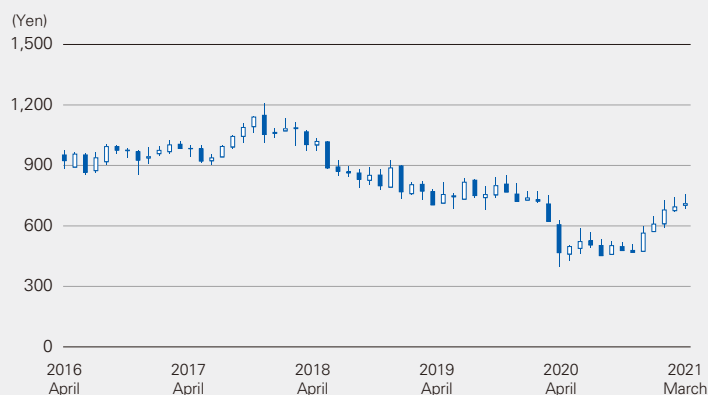
	FY 2020	FY 2019
Total for the year	¥9.00	¥16.00
Interim	4.50	8.00

Principal Stockholders

	Shares held	Percentage of shares held*
The Master Trust Bank of Japan, Ltd. (Trust Account)	154,224,000	9.63
Custody Bank of Japan, Ltd. (Trust Account)	113,317,100	7.08
Nippon Life Insurance Co.	71,212,250	4.45
Taiju Life Insurance Co., Ltd.	35,961,000	2.25
Custody Bank of Japan, Ltd. (Trust 7 Account)	26,932,100	1.68
National Mutual Insurance Federation of Agricultural Cooperatives	26,593,000	1.66
Custody Bank of Japan, Ltd. (Trust 4 Account)	24,420,300	1.53
Sumitomo Mitsui Banking Corporation	24,022,000	1.50
State Street Bank West Client-Treaty 505234	22,033,714	1.38
Custody Bank of Japan, Ltd. (Trust 5 Account)	21,759,800	1.36

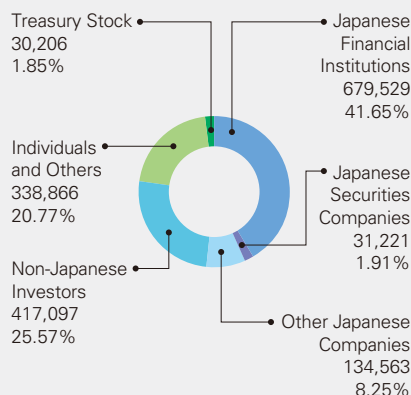
* Percentage of shares held is calculated excluding 30,205,694 shares of treasury stock.

Stock Price Range



Composition of Stockholders

(Thousands of shares)



Corporate Data (As of March 31, 2021)

Toray Industries, Inc.

Head Office

Nihonbashi Mitsui Tower, 1-1,
Nihonbashi-Muromachi 2-chome,
Chuo-ku, Tokyo 103-8666, Japan
Telephone: 81 (3) 3245-5111
Facsimile: 81 (3) 3245-5054
URL: www.toray.com

Established:

January 1926

Paid-in Capital:

¥147,873,030,771

Number of Employees:

46,267

Parent company: 7,420
Japanese subsidiaries: 10,246
Overseas subsidiaries: 28,601