

Investor Information

(As of March 31, 2017)

Common Stock:

Issued: 1,599,971,887 shares
(excluding treasury stock)
Number of Stockholders: 137,641

Annual General Meeting:

The annual general meeting of stockholders is normally held in June in Tokyo.

Listings:

Common stock is listed on the Tokyo Stock Exchange.

Independent Auditors:

Ernst & Young ShinNihon LLC

Transfer Agent:

Sumitomo Mitsui Trust Bank, Limited
1-4-1, Marunouchi Chiyoda-ku, Tokyo
100-0005, Japan

Cash Dividends Per Share

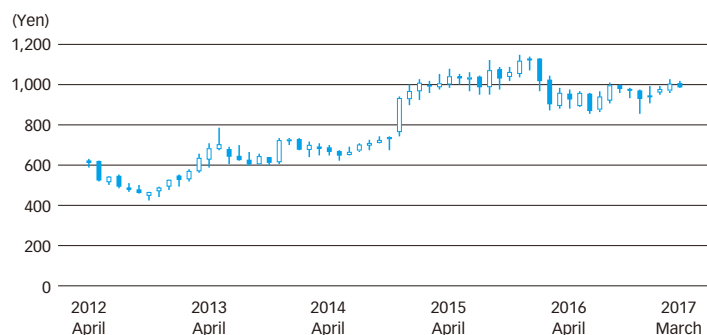
Years ended March 31	2017	2016
Total for the year	¥14.00	¥13.00
Interim	7.00	6.00

Principal Stockholders

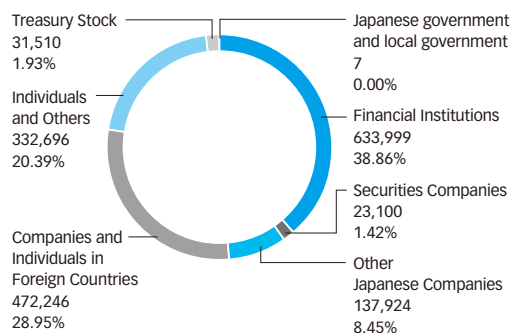
	Thousands of shares	Percentage of shares held
The Master Trust Bank of Japan, Ltd. (Trust Account)	116,760	7.30
Japan Trustee Services Bank, Ltd. (Trust Account)	95,213	5.95
Nippon Life Insurance Co.	71,212	4.45
Mitsui Life Insurance Co., Ltd.	35,961	2.25
Sumitomo Mitsui Banking Corporation	30,022	1.88
Japan Trustee Services Bank, Ltd. (Trust 5 Account)	27,918	1.74
State Street Bank West Client – Treaty 505234	25,813	1.61
Japan Trustee Services Bank, Ltd. (Trust 4 Account)	23,366	1.46
Japan Trustee Services Bank, Ltd. (Trust 9 Account)	22,164	1.39
Japan Trustee Services Bank, Ltd. (Trust 7 Account)	20,896	1.31

*Percentage of shares held is calculated excluding 31,509,516 shares of treasury stock.

Stock Price Range



Composition of Stockholders (Thousands of shares)



Corporate Data

(As of March 31, 2017)

Toray Industries, Inc.

Head Office

Nihonbashi Mitsui Tower, 1-1,
Nihonbashi-Muromachi 2-chome,
Chuo-ku, Tokyo 103-8666, Japan
Telephone: 81(3)3245-5111
Facsimile: 81(3)3245-5054
URL: <http://www.toray.com>

Established:

January 1926

Capital Stock:

¥147,873,030,771

Number of Employees:

46,248

Parent company: 7,220
Japanese subsidiaries: 10,657
Overseas subsidiaries: 28,371