

Board of Directors and Corporate Auditors

(As of June 26, 2018)



President
and Representative
Member of the Board
Akihiro Nikkaku



Executive Vice President
and Representative
Member of the Board
Koichi Abe



Executive Vice President
and Representative
Member of the Board
Ryo Murayama



Executive Vice President
and Representative
Member of the Board
Yukichi Deguchi



Senior Vice President
(Member of the Board and Member
of the Executive Committee)
Mitsuo Ohya



Senior Vice President
(Member of the Board and Member
of the Executive Committee)
Hiroshi Otani



Senior Vice President
(Member of the Board and Member
of the Executive Committee)
Toru Fukasawa



Senior Vice President
(Member of the Board and Member
of the Executive Committee)
Kazuo Morimoto



Senior Vice President
(Member of the Board and Member
of the Executive Committee)
Osamu Inoue



Senior Vice President
(Member of the Board)
Yasuo Suga



Senior Vice President
(Member of the Board)
Hirofumi Kobayashi



Senior Vice President
(Member of the Board)
Tetsuya Tsunekawa



Senior Vice President
(Member of the Board)
Takashi Fujimoto



Senior Vice President
(Member of the Board)
Kazuyuki Adachi



Vice President
(Member of the Board)
Shigeki Taniguchi



Vice President
(Member of the Board)
Hideki Hirabayashi



Vice President
(Member of the Board)
Hiroshi Enomoto



Vice President
(Member of the Board)
Kunio Ito^{*1}



Vice President
(Member of the Board)
Ryoji Noyori^{*1}



Corporate Auditor
Shogo Masuda



Corporate Auditor
Shoshiro Taneichi



Corporate Auditor
Toshio Nagai^{*2}



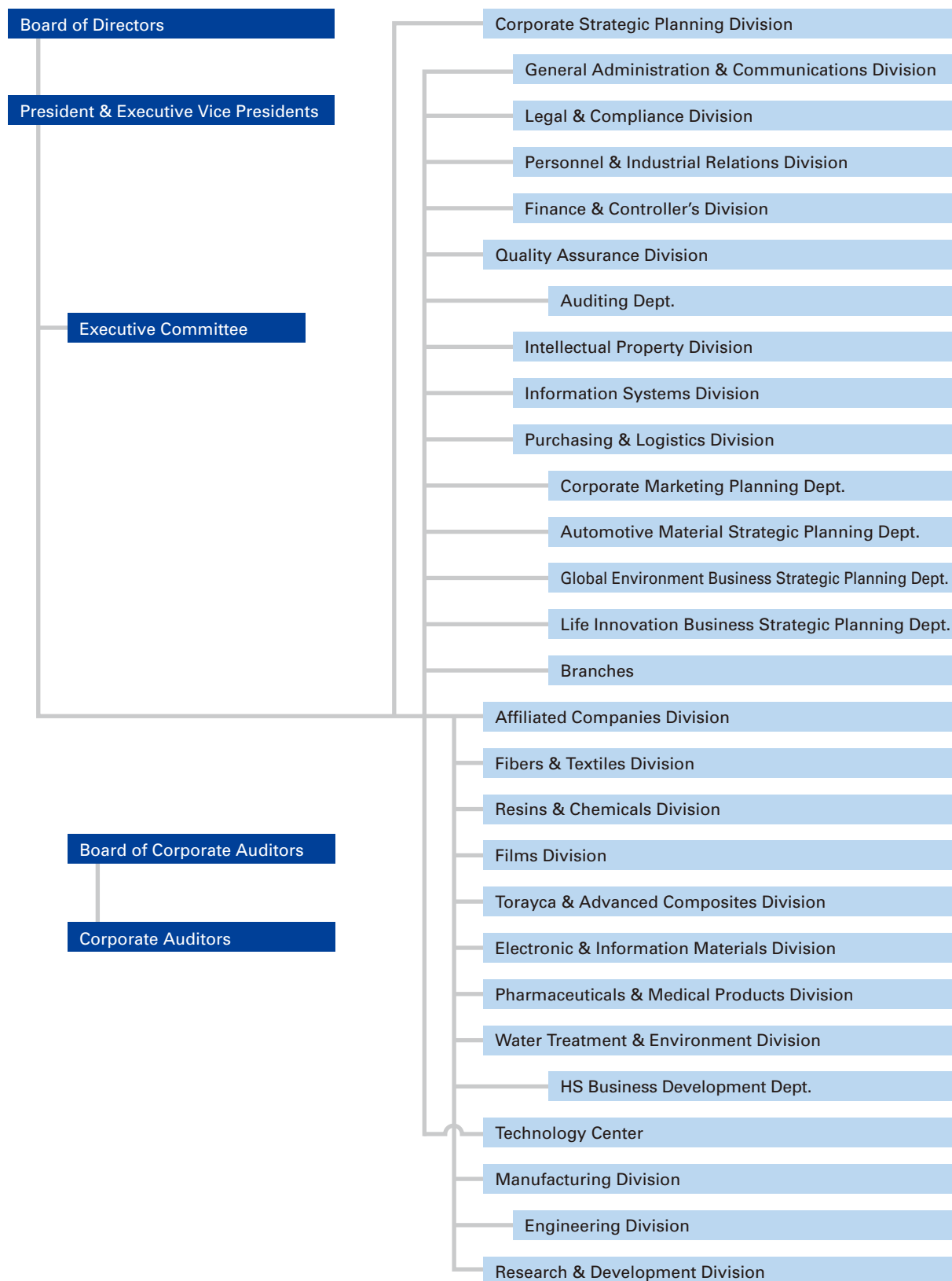
Corporate Auditor
Kazuya Jono^{*2}

*1 Kunio Ito and Ryoji Noyori are outside directors.

*2 Toshio Nagai and Kazuya Jono are outside corporate auditors.

Organization

(As of July 1, 2018)

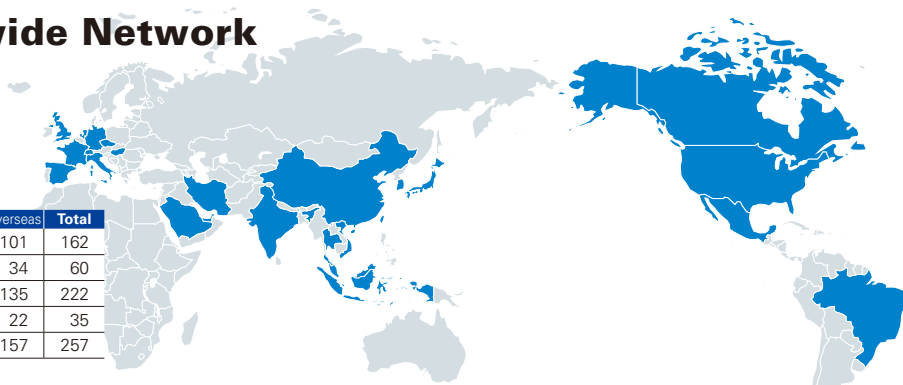


Toray Group Worldwide Network

(As of March 31, 2018)

Toray Group operates businesses in 26 countries and regions including Japan.

	Japan	Overseas	Total
Consolidated subsidiaries	61	101	162
Subsidiaries accounted for by equity method	26	34	60
Total subsidiaries	87	135	222
Affiliates accounted for by equity method	13	22	35
Companies subject to consolidation	100	157	257



EUROPE

United Kingdom

Consolidated Subsidiaries

- Toray Textiles Europe Ltd. (TTEL)
- Toray International U.K. Ltd. (TIUK)

France

Consolidated Subsidiaries

- Toray Films Europe S.A.S. (TFE)
- Toray Carbon Fibers Europe S.A. (CFE)

Switzerland

Subsidiary Accounted for by Equity Method

- Toray Membrane Europe AG (TMEu)

Italy

Consolidated Subsidiary

- Alcantara S.p.A.

Subsidiaries Accounted for by Equity Method

- Toray International Italy S.r.l. (TIIT)
- Composite Materials (Italy) S.r.l. (CIT)
- Delta-Tech S.p.A. (DELTA)

Czech Republic

Consolidated Subsidiary

- Toray Textiles Central Europe s.r.o. (TTCE)

Germany

Consolidated Subsidiaries

- Euro Advanced Carbon Fiber Composites GmbH (EACC)
- Toray International Europe GmbH (TIEU)
- Others

ASIA

China

Consolidated Subsidiaries

- Toray Industries (China) Co., Ltd. (TCH)
- Toray Fibers (Nantong) Co., Ltd. (TFNL)
- Toray Sakai Weaving & Dyeing (Nantong) Co., Ltd. (TSD)
- Toray Polytech (Nantong) Co., Ltd. (TPN)
- Toray Plastics (China) Co., Ltd. (TPCH)
- Toray Plastics (Shenzhen) Ltd. (TPSZ)
- Toray Plastics (Chengdu) Co., Ltd. (TPCD)
- Toray Plastics Precision (Hong Kong) Ltd. (TPPH)
- Toray Plastics Precision (Zhongshan) Ltd. (TPPZ)
- Toray Industries (H.K.) Ltd. (THK)
- Toray International (China) Co., Ltd. (TICH)
- Toray Film Products (Hong Kong) Ltd. (TFH)
- Toray Film Products (Zhongshan) Ltd. (TFZ)
- Toray BlueStar Membrane Co., Ltd. (TBMCO)
- Toray Medical (Qingdao) Co., Ltd. (TMQ)
- Others

Affiliate Accounted for by Equity Method

- Yihua Toray Polyester Film Co., Ltd. (YTP)

Taiwan

Consolidated Subsidiary

- Toray Advanced Film Kaohsiung Co., Ltd. (TAFK)

Subsidiaries Accounted for by Equity Method

- Toray International Taipei Inc. (TITP)
- Others

Republic of Korea

Consolidated Subsidiaries

- Toray Advanced Materials Korea Inc. (TAK)
- STEMCO, Ltd. (STEMCO)
- Toray Chemical Korea Inc. (TCK)

Affiliates Accounted for by Equity Method

- STECO, Ltd. (STECO)
- Others

Malaysia

Consolidated Subsidiaries

- Penfabric Sdn. Berhad (PAB)
- Penfibre Sdn. Berhad (PFR)
- Toray Plastics (Malaysia) Sdn. Berhad (TPM)
- Others

Subsidiary Accounted for by Equity Method

- Toray Industries (Malaysia) Sdn. Berhad (TML)

Affiliate Accounted for by Equity Method

- Toray BASF PBT Resin Sdn. Berhad (TBPR)

Singapore

Consolidated Subsidiary

- Toray International Singapore Pte. Ltd. (TISP)

Japan

Consolidated Subsidiaries

- Ichimura Sangyo, Co., Ltd.
- Toray Fine Chemicals Co., Ltd.
- Toyo Plastic Seiko Co., Ltd.
- Toray Advanced Film Co., Ltd.
- Toray KP Films Inc.
- Soda Aromatic Co., Ltd.
- Toray Engineering Co., Ltd.
- Toray Carbon Magic Co., Ltd.
- Toray Construction Co., Ltd.
- Suido Kiko Kaisha, Ltd.
- Toray Medical Co., Ltd.
- Toray Research Center Inc.
- Toray International, Inc.
- Chori Co., Ltd.
- Others

Subsidiaries Accounted for by Equity Method

- Toyo Business Support Inc.
- Others

Affiliates Accounted for by Equity Method

- Du Pont-Toray Co., Ltd.
- Toray Opelontex Co., Ltd.
- Dow Corning Toray Co., Ltd.
- Sanyo Chemical Industries, Ltd.
- Others

Indonesia

Consolidated Subsidiaries

- P.T. Acryl Textile Mills (ACTEM)
- P.T. Century Textile Industry Tbk (CENTEX)
- P.T. Easterntex (ETX)
- P.T. Indonesia Synthetic Textile Mills (ISTEM)
- P.T. Indonesia Toray Synthetics (ITS)
- P.T. Toray Polytech Jakarta (TPJ)

Subsidiaries Accounted for by Equity Method

- P.T. Toray Industries Indonesia (TIN)
- Others

Affiliates Accounted for by Equity Method

- P.T. Petnesia Resindo (PNR)
- Others

Thailand

Consolidated Subsidiaries

- Luckytex (Thailand) Public Co., Ltd. (LTX)
- Thai Toray Textile Mills Public Co., Ltd. (TTTM)
- Thai Toray Synthetics Co., Ltd. (TTS)

Subsidiaries Accounted for by Equity Method

- Toray Industries (Thailand) Co., Ltd. (TTH)
- Carbon Magic (Thailand) Co., Ltd. (CMTH)

NORTH AMERICA

U.S.A.

Consolidated Subsidiaries

- Toray Fluorofibers (America), Inc. (TFA)
- Toray Plastics (America), Inc. (TPA)
- Toray Resin Co. (TREC)
- Toray Composite Materials America, Inc. (CMA)
- Zoltek Companies, Inc. (Zoltek)
- Toray Membrane USA, Inc. (TMUS)
- Toray International America Inc. (TIAM)
- Others

Mexico

Consolidated Subsidiary

- Toray Resin Mexico, S.A. de C.V. (TRMX)

- Regional Supervisory Organization
- Fibers & Textiles
- Performance Chemicals
- IT-related Products
- Carbon Fiber Composite Materials
- Environment & Engineering
- Life Science & Other Businesses
- Trading

Major Office in Japan

Osaka Head Office

Nakanoshima Mitsui Building,
3-3, Nakanoshima 3-chome,
Kita-ku, Osaka 530-8222,
Japan
Telephone: 81 (6) 6445-4101
Facsimile: 81 (6) 7688-4001

Overseas Offices

U.S.A.

Toray Industries (America), Inc. (TAM)
9th Fl., 461 Fifth Ave., New York,
NY 10017, U.S.A.
Telephone: 1 (212) 697-8150
Facsimile: 1 (212) 972-4279

Germany

Toray Industries, Europe Office GmbH (TEU)
Hugenottenallee 175, 63263
Neu-Isenburg, Germany
Telephone: (49) 6102-7999-1000
Facsimile: (49) 6102-7999-1008

China

Toray Industries, Inc., Beijing Office
Beijing Fortune Bldg., No. 702, 5,
Dong San Huan Bei-Lu, Chao Yang
District, Beijing 100004, China
Telephone: 86 (10) 6590-8961—3
Facsimile: 86 (10) 6590-8964

Republic of Korea

Toray Industries, Inc., Seoul Office
36Fl., FKI Tower, 24, Yeoui-daero,
Yeongdeungpo-gu, Seoul, 07320
Republic of Korea
Telephone: 82 (2) 707-0381—2
Facsimile: 82 (2) 707-0067

India

Toray Industries (India) Private Limited (TID)
12th Fl., Prestige Polygon, 471 Anna
Salai, Teynampet, Chennai 600035, Tamil
Nadu, INDIA
Telephone: 91 (44) 4003-6100
Facsimile: 91 (44) 4003-6101

Brazil

Toray do Brasil Ltda. (TBL)
Av. Paulista, 1048-Conj 71 Bela Vista Sao
Paulo - SP 01310-100, Brasil
Telephone/Facsimile: 55 (11) 4314-7792

Investor Information

(As of March 31, 2018)

Common Stock:

Issued: 1,600,271,569 shares
(excluding treasury stock)

Number of Stockholders: 155,653

Annual General Meeting:

The annual general meeting of stockholders is normally held in June in Tokyo.

Listings:

Common stock is listed on the Tokyo Stock Exchange.

Independent Auditors:

Ernst & Young ShinNihon LLC

Transfer Agent:

Sumitomo Mitsui Trust Bank, Limited
1-4-1, Marunouchi Chiyoda-ku, Tokyo
100-0005, Japan

Cash Dividends Per Share

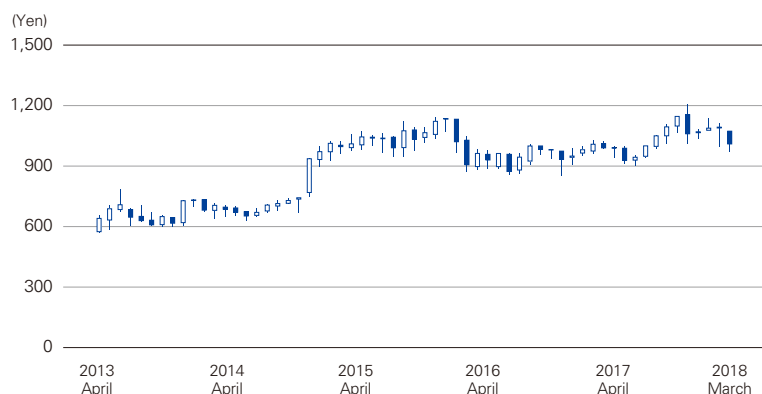
Years ended March 31	FY 2018	FY 2017
Total for the year	¥15.00	¥14.00
Interim	7.00	7.00

Principal Stockholders

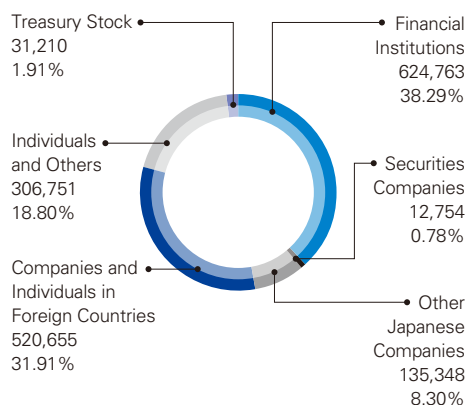
	Thousands of shares	Percentage of shares held
The Master Trust Bank of Japan, Ltd. (Trust Account)	117,902,200	7.37
Japan Trustee Services Bank, Ltd. (Trust Account)	91,157,200	5.70
Nippon Life Insurance Co.	71,212,250	4.45
Mitsui Life Insurance Co., Ltd.	35,961,000	2.25
State Street Bank West Client – Treaty 505234	31,680,351	1.98
Japan Trustee Services Bank, Ltd. (Trust 5 Account)	29,035,900	1.81
Sumitomo Mitsui Banking Corporation	28,522,000	1.78
Japan Trustee Services Bank, Ltd. (Trust 4 Account)	25,510,000	1.59
Japan Trustee Services Bank, Ltd. (Trust 7 Account)	21,638,700	1.35
Japan Trustee Services Bank, Ltd. (Trust 1 Account)	21,546,300	1.35

* Percentage of shares held is calculated excluding 31,209,834 shares of treasury stock.

Stock Price Range



Composition of Stockholders (Thousands of shares)



Corporate Data

(As of March 31, 2016)

Toray Industries, Inc.

Head Office

Nihonbashi Mitsui Tower, 1-1,
Nihonbashi-Muromachi 2-chome,
Chuo-ku, Tokyo 103-8666, Japan
Telephone: 81 (3) 3245-5111
Facsimile: 81 (3) 3245-5054
URL: www.toray.com

Established:

January 1926

Paid-in Capital:

¥147,873,030,771

Number of Employees:

45,762

Parent company: 7,625

Japanese subsidiaries: 10,590

Overseas subsidiaries: 27,547